



The **GALLERY TRUST**



A community of special schools

**Teacher  
Iffley Academy  
Candidate Information Pack  
April 2025**

Thank you for your interest in the post of Teacher at Iffley Academy.

Iffley Academy is a very successful academy and has grown in recent years with a current number on roll of 180 students. The Academy has a long and proud history, with a school on the current site in Iffley since the 1960s. Judged as Outstanding in 2015, 2019 and 2024, the Academy meets the needs of students with a range of SEND, including Cognition and Learning Needs, Autistic Spectrum Disorder and Social, Emotional and Mental Health Needs. Our learning community is based on respectful relationships with students, created through understanding of their special educational needs, commitment to restorative approaches, and by providing outstanding teaching and pastoral care. This is a warm and caring community, dedicated to equipping students with the skills and knowledge they need to live independent lives within their chosen communities.

Iffley Academy is a member of The Gallery Trust, an expanding Special Needs Multi Academy Trust which is dedicated to improving outcomes for SEND learners in Oxfordshire. The Trust has a national reputation for excellence and is influential in the development of SEND strategy in the county. With six academies currently in the Trust, our aim is to build a community of eight to ten special schools over the next five years.

Please visit our website to find out more about Iffley Academy. If you would like to visit the school to find out more about this exceptional opportunity before you submit your application, you will be most welcome. Our staff and students will be delighted to meet you!

Thank you again for your interest and we look forward to hearing from you.



*Yvette Fay*  
*Head Teacher*

**Teacher**  
**Iffley Academy, Oxford**

**Full Time Permanent** (part time would be considered)  
**Salary: TMS/UPS plus SEN allowance (*SEN 1 moving to SEN 2*)**

Start date: Current notice period (or with immediate start)

If you are committed to enriching and improving the lives of young people with Special Educational Needs and Disabilities, if you would like to join a team which delivers an exciting and diverse curriculum which is not driven by the National Curriculum or exam outcomes, and if you want to work in a vibrant and Outstanding Special Academy – we want to hear from you.

The Iffley Academy is Oxfordshire's largest Special School, and caters for pupils aged 11-18 with a diverse range of SEN, including Moderate Cognition and Learning Needs, Autistic Spectrum Disorder and Social, Emotional and Mental Health needs. We have high expectations of our students, and are dedicated to removing the barriers to learning so students can achieve their full potential.

Students are taught through a differentiated and bespoke curriculum designed to enhance academic and social development, with a strong emphasis on independence skills. The curriculum delivers a thematic, cyclical approach to provide a meaningful and interesting context for the development of basic skills, knowledge and understanding while providing the relevant National Curriculum requirements. Classes are grouped into stage, not age, allowing for innovative and creative approaches to teaching and learning and are taught predominantly by one class teacher, supported by additional class adults. The Academy provides support for the social and emotional needs of students through a qualified and skilled therapeutic team, underpinned by a pastoral support team. The offer to students is enhanced by additional specialist therapies and interventions.

Our focus is to recruit teachers who are keen to grasp the possibilities offered by the Academy where practice is based on SEN pedagogy and evidence: who would relish getting involved in exciting national professional development projects, and who want to work as part of a multi-disciplinary and specialist team.

In return for your determination to make a difference to the lives of our learners, we can offer you the opportunity to work in new state of the art buildings and become part of our inclusive and supportive community.

**Our unique features include:**

- A curriculum model which is designed around a cyclical thematic approach, rather than a subject led offer
- Individual learning pathways which teach the way our SEN students learn and moves away from the “one size fits all” approach.
- An ethos of Restorative Approaches, mutual respect, and social responsibility which creates an inclusive and nurturing community
- The teaching of functional skills for life and vocational options and the chance to support students in achieving accreditation which prepares them for the workplace.
- A flexible, innovative and student-centred approach, which supports not only excellent teaching and learning, but also the emotional and mental wellbeing of students and their individual needs.

## Application Process

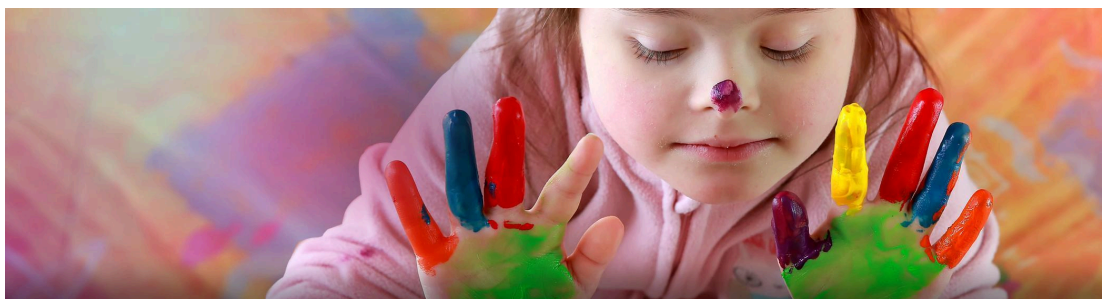
To apply for this post, please complete a Gallery Trust Teacher application form and submit to [recruitment@iffleyacademy.co.uk](mailto:recruitment@iffleyacademy.co.uk) You can download an application form and candidate information pack from our website [www.iffleyacademy.co.uk](http://www.iffleyacademy.co.uk) or from The Gallery Trust website [www.thegallerytrust.co.uk](http://www.thegallerytrust.co.uk)

Closing date for applications: 9am Monday 12th May 2025

Interview date: Tuesday 20th May 2025

Please ensure you detail any gaps in employment and use the selection criteria which is contained in the job pack when you prepare your application, as shortlisting for interview will be based on how closely you demonstrate your ability to fulfil the essential criteria. We do not accept CVs. If you are shortlisted, we will take up written references before your interview so please provide permission for this and provide accurate phone and email contact details for your referees. One of your referees must be your current or last employer, and if you are employed in a school, must include your current Head Teacher.

The Gallery Trust is committed to safeguarding and promoting the welfare of all children and expects all staff to share this commitment. Any offer of employment with The Gallery Trust is subject to verification of ID and qualifications, satisfactory evidence of the right to work in the UK, health clearance, NCTL and Enhanced Disclosure and Barring Check. The Gallery Trust is an equal opportunities employer, and we welcome applications from candidates from all ethnic and community backgrounds.



The Gallery Trust is a Multi Academy Trust which is dedicated to improving outcomes for SEND learners in Oxfordshire. The aim of the Trust is to provide outstanding education and support for young people with special needs and disabilities, enabled through:

- Commitment to special education – striving to provide the best specialist learning experience for all students
- Opportunities for all to learn – ensuring that students and staff have access to learning pathways which enhance their lives
- Genuine respect and value – creating relationships which promote trust, confidence and respect within environments which are safe and secure

The Trust is on a continuing journey of expansion, growing from a Multi Academy Trust based on a single academy in 2013, to its position as the largest Special Trust in Oxfordshire.

The schools in the Trust are:

- Bardwell School, Bicester
- Bloxham Grove Academy
- A Free Special School in South Oxfordshire, opening date to be confirmed
- Iffley Academy, Oxford
- Mabel Prichard School, Oxford
- Northern House Academy, Oxford
- Orion Academy, Oxford
- Springfield School, Witney

The Trust's vision is to continue to expand over the next five years, supporting a community of converter academies, free schools and sponsored academies. All member academies have the opportunity to share SEND expertise and to work with peers who share common aims and goals.

The Trust is committed to investment in learning, developing system leadership, working in partnership and through a shared vision, enabling all students to reach their full potential.



Iffley Academy is a community special academy for children and young people up to the age of 18 with complex special educational needs and disabilities. All of our students are individuals and we pride ourselves on taking a personalised approach.

Students have Education, Health and Care Plans with a range of needs but primarily we work with students with Moderate Cognition and Learning Difficulties, Autistic Spectrum Disorder and/or Social, Emotional and Mental Health difficulties,

The Academy was judged to be Outstanding at its most recent Ofsted inspection in February 2019, designated as a teaching school in 2018 and is part of an aspirational Multi Academy Trust – The Gallery Trust, a community of special schools, dedicated to providing outstanding education and support for young people with special needs and disabilities, enabled through: Commitment to special education; Opportunities for all to learn; Genuine respect and value.

Students work in class groups where teachers differentiate learning for all students ensuring lessons are inclusive for all.

The school has developed a comprehensive and broad curriculum, which can be found on the school's website. This curriculum, which is underpinned by detailed assessment processes, guides the learning for all students. The school has excellent links with community partners including Oxford University Gardens Libraries and Museums. Further details of this partnership can be seen here

<https://www.glam.ox.ac.uk/iffley-academy-partnership>

We understand that students are able to give their best when their needs are met, when they feel safe and when they understand their relationships with others. When a student starts at our academy every effort is made to ensure that they maximise their progress, enjoy coming to school, make new friends and feel safe. They become part of our community but most importantly their family also becomes part of our community.

## **Job Description**

### **Teacher**

#### **Responsible to: Head Teacher**

#### **Introduction:**

The job description should be read in conjunction with the current School Teachers' Pay and Conditions document and the provision of that document will apply to the post holder.

The performance of all the duties and responsibilities shown below will be under the reasonable direction of the Head Teacher. The Head Teacher, or other Senior Manager if appropriate, will be mindful of her/his duty to ensure that the employee has a reasonable workload and sufficient support to carry out the duties of the post.

The job description will be reviewed at least annually and any changes will be subject to consultation. The academy's grievance procedure will be used to resolve any disagreement arising out of the job description. Other relevant policies may be the Stress at work policy and Dignity at work policy.

#### **Teaching and learning:**

- Ensure all pupils in their care within the academy receive an exciting, effective and appropriate education as outlined in their Educational Health Care Plan (EHCP) and in accordance with the academy's curriculum framework.
- Monitor, evaluate and report on the quality of teaching and learning and classroom management standards
- The provision of suitably differentiated work to meet the individual needs of the students
- The curriculum planning and review cycle is maintained in accordance with the school's planning framework and policy
- On-going assessment of students' work and abilities through comprehensive record keeping based on the academy's agreed format
- Maintenance of good discipline in line with the academy's Restorative Approaches policy
- Contribution, wherever appropriate, to the display, presentation and celebration of students' work
- Safeguarding and promoting the welfare of all students

#### **Wider responsibilities relating to whole academy issues and procedures**

- Working for the positive development of the academy, in line with the Raising Achievement Plan
- Attending staff meetings, curriculum forums or any other relevant meetings within the stipulated 1265 directed hours
- Taking a share of supervisory duties as part of the weekly routine as necessary
- Taking appropriate responsibility for one's own health, safety and welfare and the health and safety of pupils, visitor and colleagues in accordance with the requirements and locally adopted policies: including taking responsibility for raising concerns with a manager

**Specific responsibilities agreed between the Head Teacher and the above teacher** In addition to the duties outline in the School Teachers Pay and Conditions document currently in operation, or any subsequent legislation, you will be responsible for the following:

**Teaching**

Teaching across a range of curriculum areas, including the role of tutor

**Staff development and support**

Delivering INSET training throughout the academy, as appropriate

**Links with parents, Local Authority and the wider community**

- Encouraging full parental participation in the work, life and development of the school and making sure they are fully informed of their child's progress. To be available to deal with parental concerns and provide support where possible or refer to other professionals or agencies.
- Working co-operatively with the Governing Body and Trustees
- Liaising and co-ordinating with external agencies and other professionals

## **Selection Criteria Teacher**

### **Professional Qualifications**

- Qualified teacher status
- Relevant Professional qualification

### **Experience**

- Successful teaching experience
- Planning for and teaching pupils with SEN
- Effective involvement in school improvement planning and monitoring
- Evidence of strategies developed for target setting and monitoring performance in order to raise pupil achievement
- Experience of interactive teaching methods
- Evidence of differentiation of the curriculum

### **Professional knowledge and skills**

- Awareness of current initiatives, issues and legislation
- Experience of using ICT effectively
- Knowledge and experience of developing a purposeful learning environment and using a range of strategies to promote good behaviour
- Respect for pupils' social, cultural, linguistic, religious and ethnic backgrounds with an understanding of how these may affect their learning
- Understanding the role of teaching assistants in maximising pupils' learning
- Knowledge and experience of applying a framework of curriculum planning which: includes long and short term plans; requires learning objectives to be identified for classes, group and individuals; enables monitoring, assessment and recording of pupils' progress

Your application should clearly demonstrate how well you meet the above key criteria.

February 2024