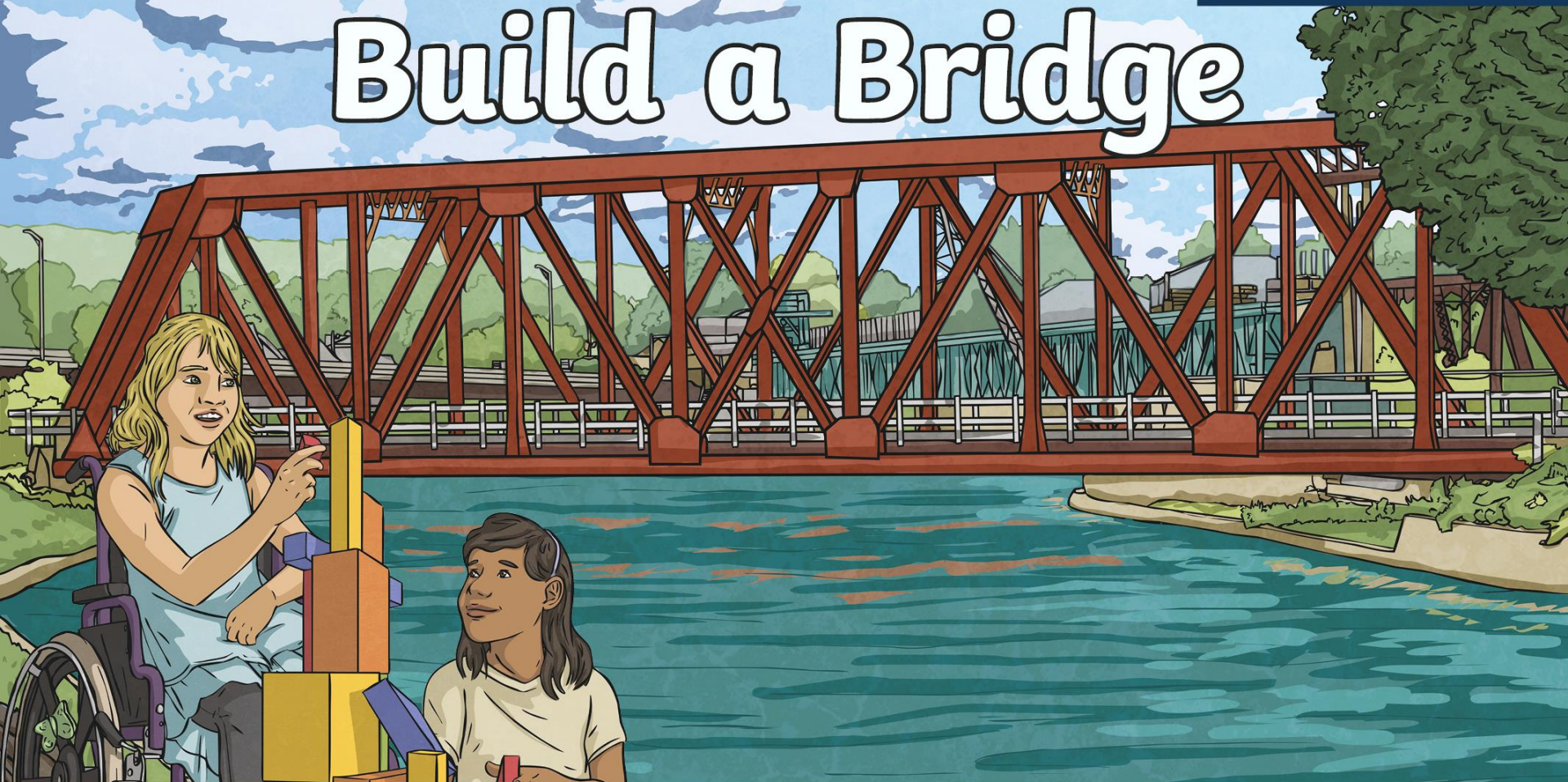




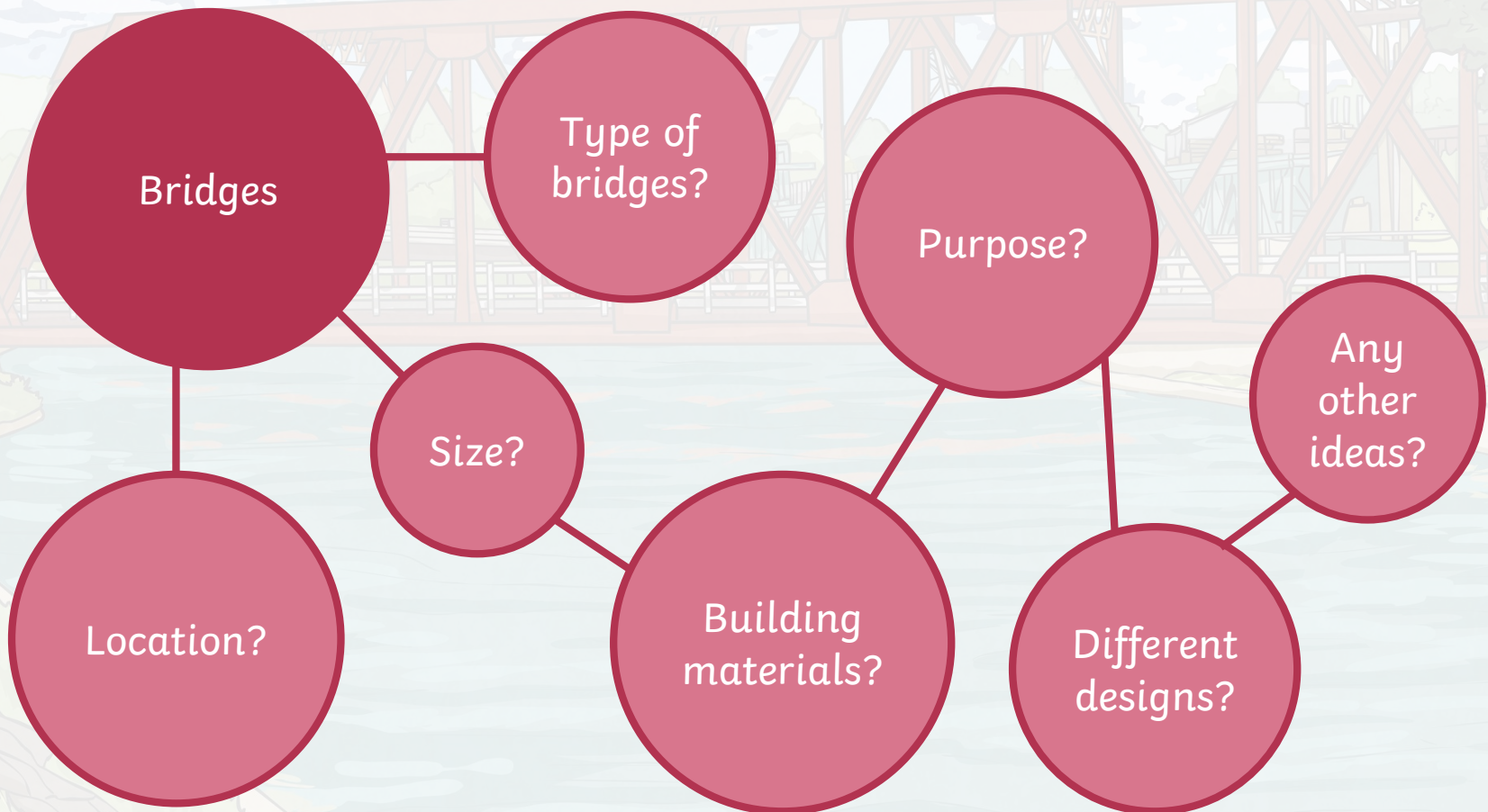
STEPS
Engineers Week
Feb 29 – Mar 6 2020

Build a Bridge



What Is a Bridge?

Let's see what you already know about bridges.



What Is a Bridge?

A bridge is a special structure that makes it possible for people and vehicles to cross over obstacles such as water and roads.

It must be strong enough to hold itself up and to carry the weight of whatever travels across it.



Types of Bridge

There are six main types of bridge.



1

A suspension bridge

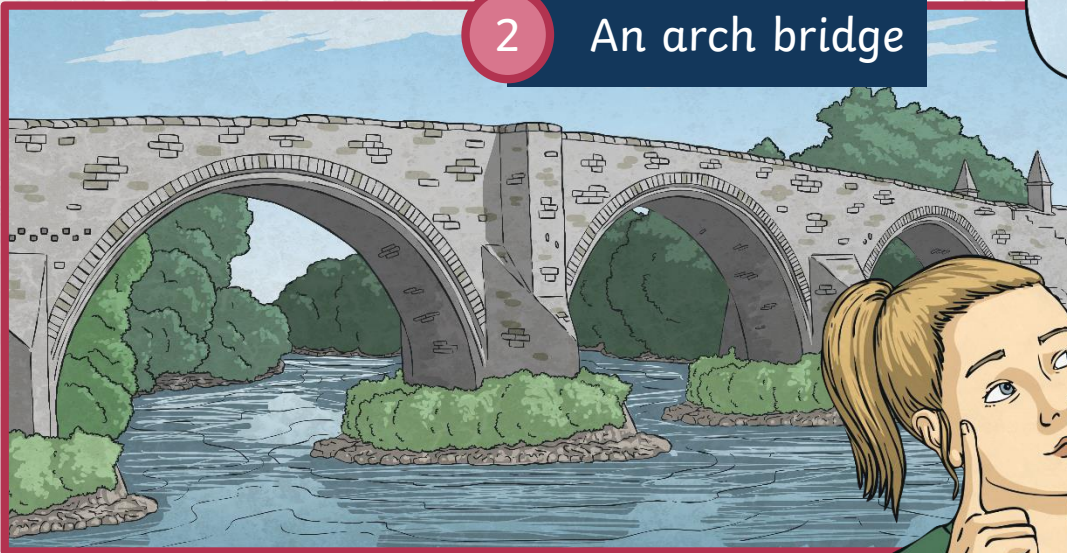
What do you notice about the structure of a suspension bridge?



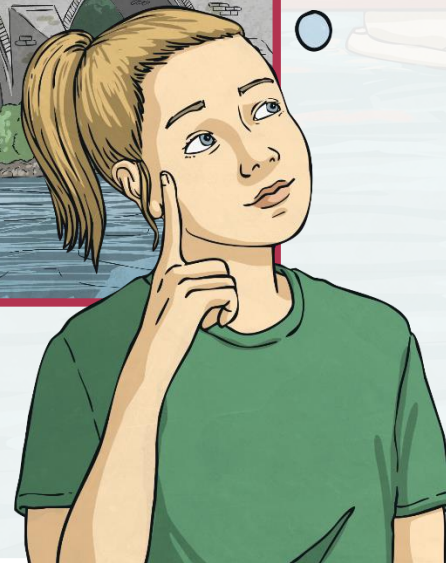
Types of Bridge

2

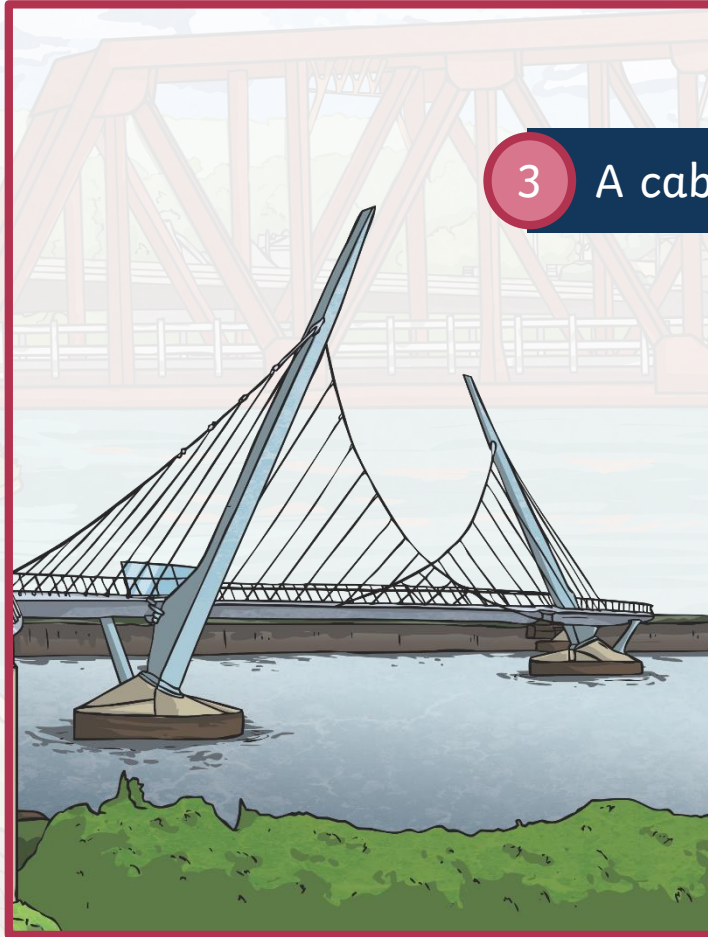
An arch bridge



Do you notice anything interesting about the arch bridge?



Types of Bridge



3

A cable-stayed bridge

What do you notice about a cable-stayed bridge?

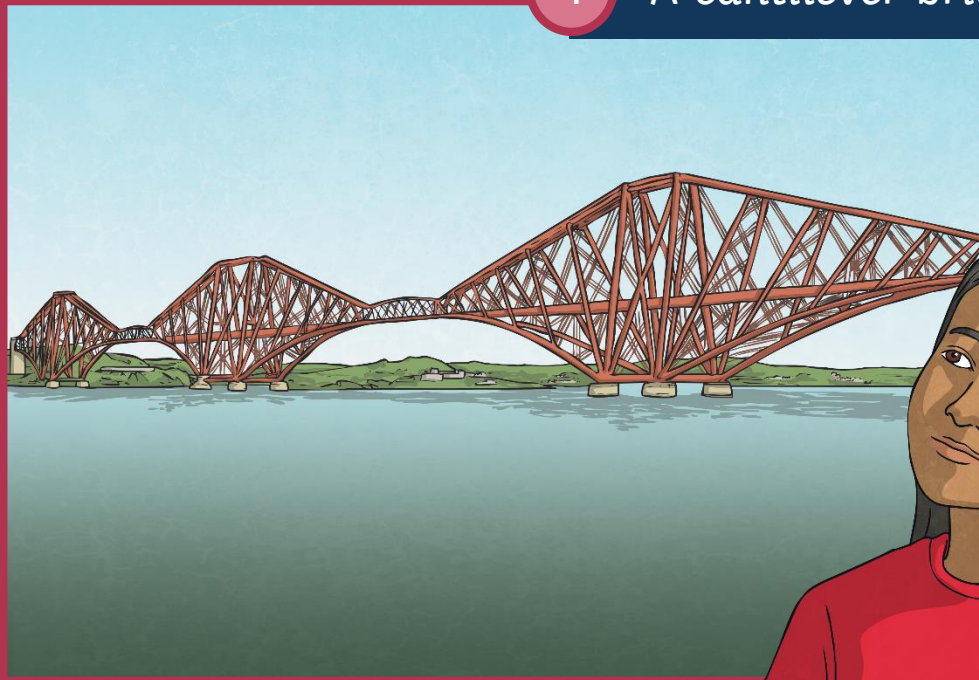


Types of Bridge

4

A cantilever bridge

What do you think of the design of this bridge?

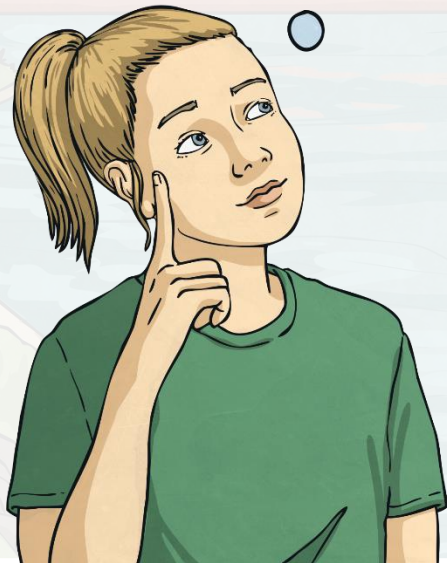


Types of Bridge

What do you notice about the design of a beam bridge?

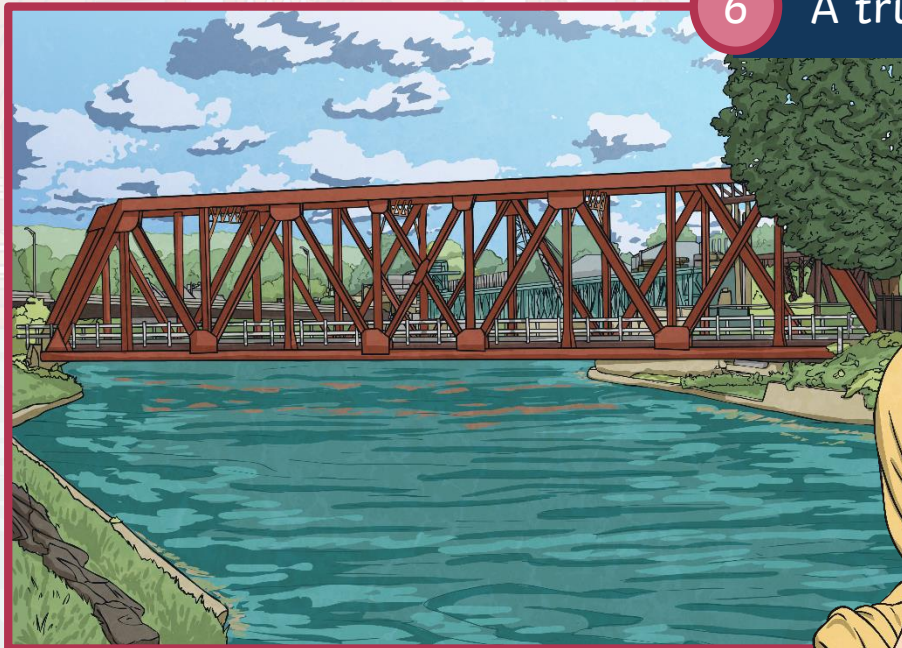
5

A beam bridge



Types of Bridge

6 A truss bridge



Do you see anything interesting about the structure of a truss bridge?





Some things to think about...

- How will you make the structure of the bridge strong?
- What features will you add to strengthen the bridge?
- What material will you choose for the bridge? Why?
- What challenges do you think you might face when building the bridge?

Build a Bridge

Now, it's your turn to design and build a bridge.

First

you will need to draw and label a plan for the bridge.

Next

you will need to experiment with the shape and the materials that you plan to use.

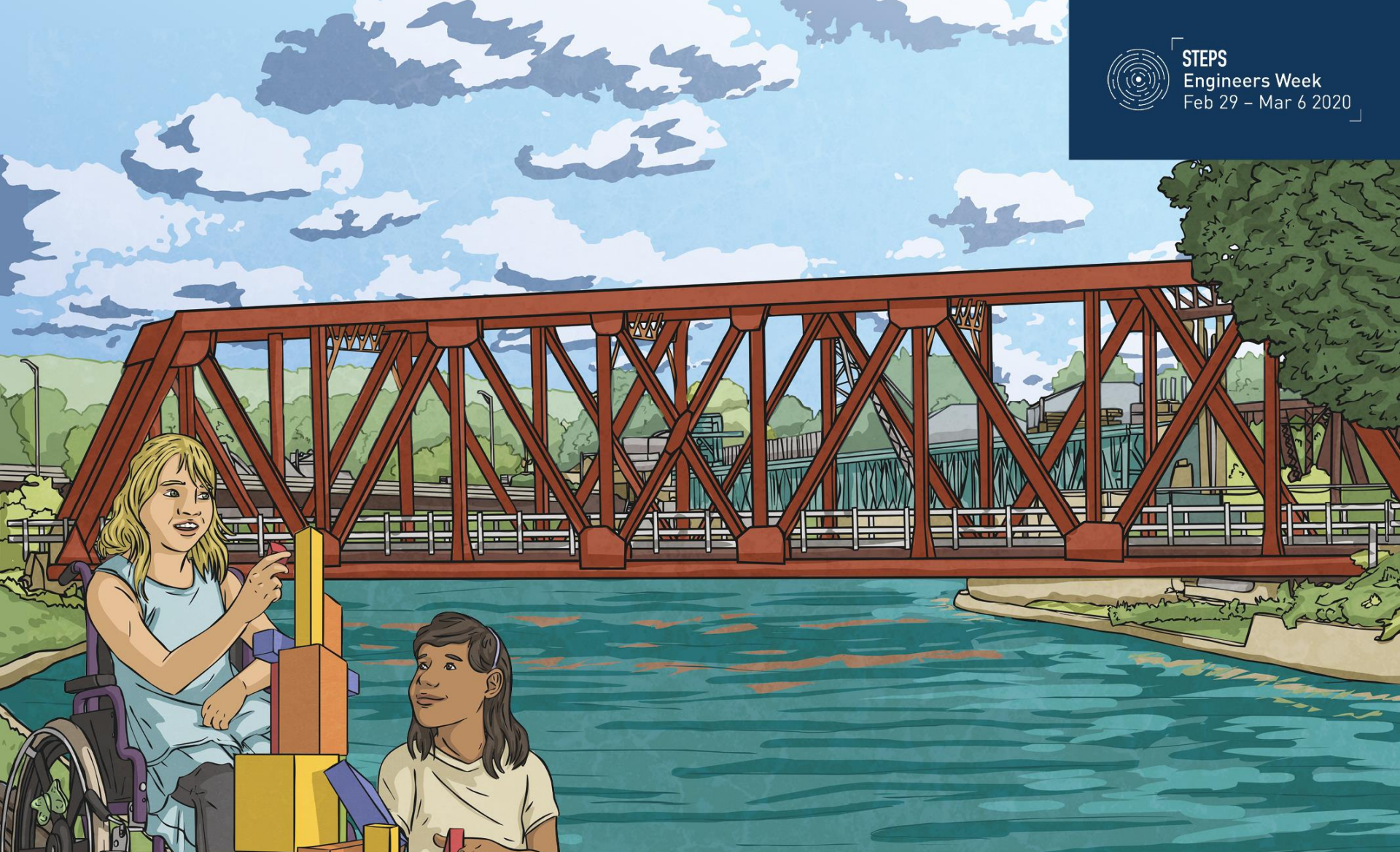
Then

once your bridge is constructed, you can test it to see if your structure is sturdy and strong.

Good luck!



STEPS
Engineers Week
Feb 29 – Mar 6 2020



 ENGINEERS
IRELAND
STEPS

